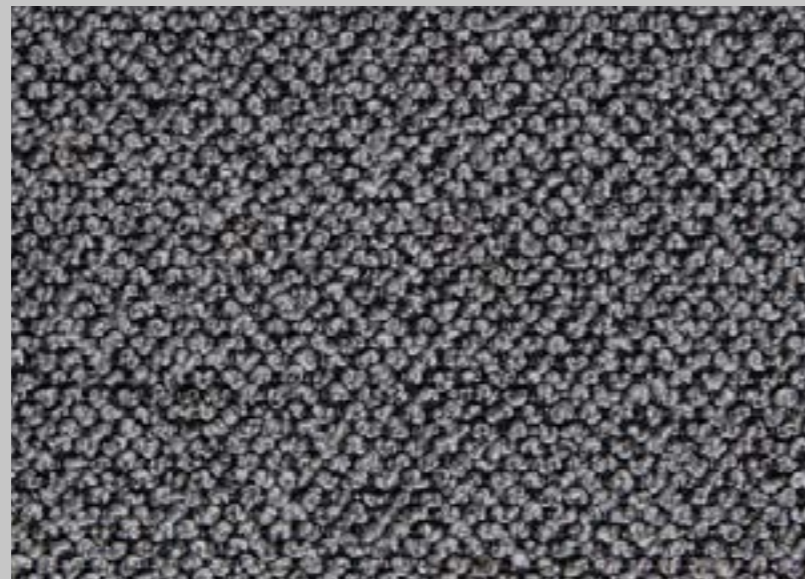


rondadesign[®]



T E S S U T I _ F A B R I C S

BOUCLÉ



CLICCA QUI
E SCARICA I **TESSUTI**
PER I TUOI PROGETTI.

CLICK HERE
AND DOWNLOAD THE **FABRICS**
FOR YOUR PROJECTS.

CLIQUEZ ICI ET TÉLÉCHARGEZ
LES **TISSUS** POUR VOS PROJETS.

HAGA CLIC AQUÍ Y DESCARGUE
LOS **TELAS** PARA TUS PROYECTOS.

HIER KLICKEN
UND HERUNTERLADEN
DIE **STOFFE** FÜR IHRE PROJEKTE.

BOUCLÉ



Product profile for upholstery fabrics in living areas | according to DIN EN 14465:2006

roll length: ~ 40 m
 useable width: 142 cm + | - 2 cm
 material thickness: 1.9 mm + | - 2 %

width: 145 cm + | - 2 cm
 weight m DIN EN 12127: 825 g + | - 5 %
 weight m² DIN EN 12127: 570 g + | - 5 %

composition | EU 1007/2011: 100% polyester

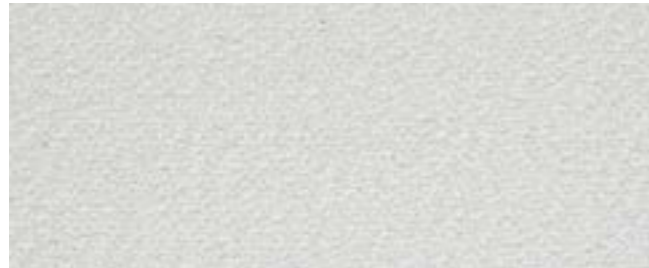
Abrasion test EN ISO 12947-1,2	> 90.000 cycles	category A
Pilling test EN ISO 12945-2 (2.000 T)	5	category A
Tensile strength EN ISO 13934-1 warp: weft:	1800 N 800 N	category A category A
Tear growth resistance EN ISO 13937-3 warp: weft:	135 N 320 N	category A category A
Resistance to seam slippage EN ISO 13936-2 warp: weft:	4.5 mm 3.0 mm	category A category A
Fastness to rubbing EN ISO 105-X12 dry bright colours: dark colours:	4-5 4-5	category A category A
Fastness to rubbing EN ISO 105-X12 wet bright colours: dark colours:	4-5 4-5	category A category A
Fastness to light EN ISO 105-B02-2 bright colours: dark colours:	6 6	category A category A
Permissible colour tolerance DIN EN 20105-A02	min. grade 4	passed

Recommended care labeling



Test results were gathered from various samples and therefore represent average indicative values.

BOUCLÉ



B02 PANNA



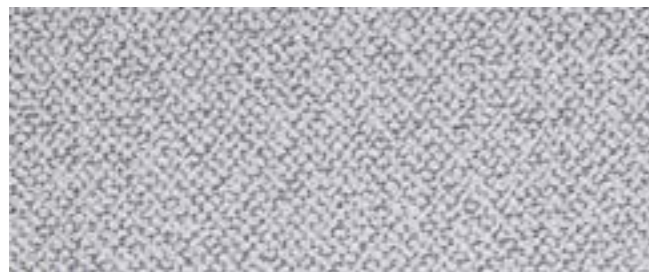
B15 SATIN



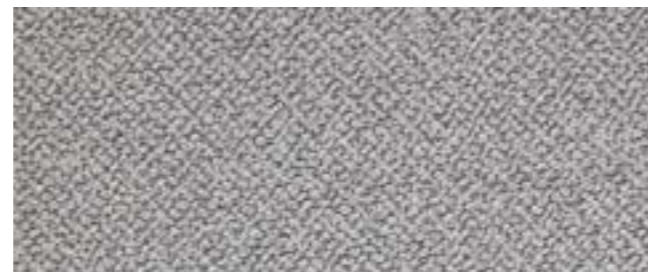
B01 PEARL



B07 MATCHA



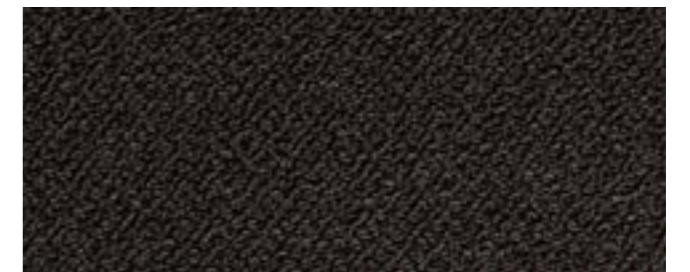
B21 ECLISSE



B20 SILVER



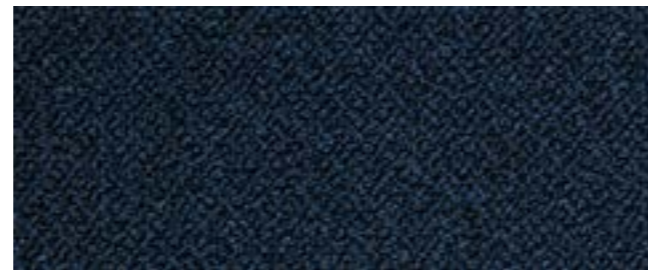
B45 IRON



B71 COLA



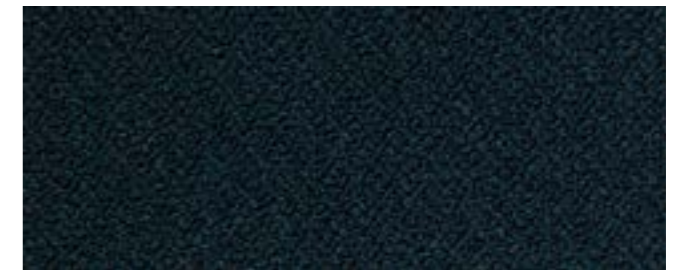
B09 DENIM



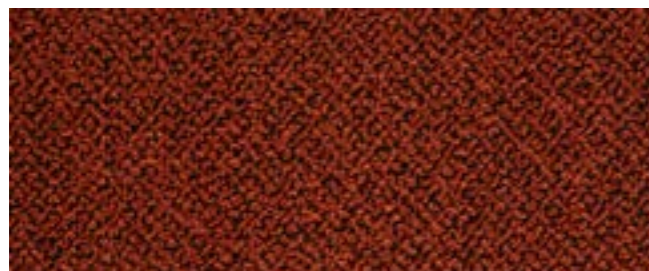
B10 PAVONE



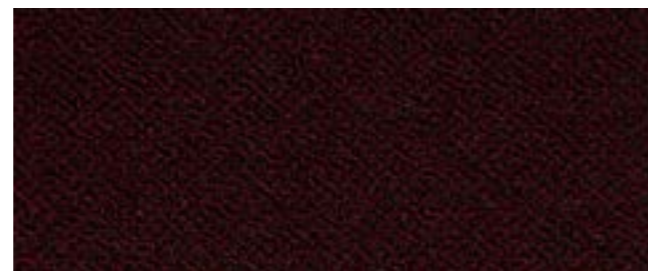
B22 PALUDE



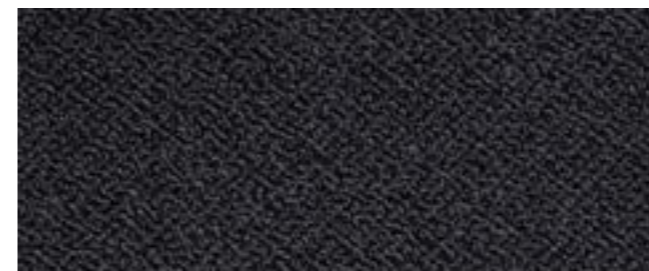
B43 CIPRESSO



B51 BRICK



B36 VINACCIA



B60 BASALTO



B78 NOTTE

DANCING QUEEN



CLICCA QUI
E SCARICA I **TESSUTI**
PER I TUOI PROGETTI.

CLICK HERE
AND DOWNLOAD THE **FABRICS**
FOR YOUR PROJECTS.

CLIQUEZ ICI ET TÉLÉCHARGEZ
LES **TISSUS** POUR VOS PROJETS.







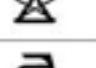

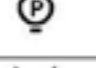

HAGA CLIC AQUÍ Y DESCARGUE
LOS **TELAS** PARA TUS PROYECTOS.

HIER KLICKEN
UND HERUNTERLADEN
DIE **STOFFE** FÜR IHRE PROJEKTE.

DANCING QUEEN



Scheda Tecnica / Spec Sheet

Articolo / Article L.1670 DANCING QUEEN				
Codice Nomenclatura / Tariff Code:		54079300		
Composizione / Composition	%	26 GRS CO - 21 PC - 16 WO - 15 VI - 13 PL - 6 LI - 3 PA		
Altezza pezza / Width	cm	140		
Peso tessuto / Weight	gr/ml	874		
Tintura / Dyeing	Tipo / Type	Tinto fio / Yam dyed		
Lunghezza pezza / Piece Length		30/35 m		
Caratteristica Valutata Specifications	Unità di misura Unit	Risultati Ottenuti sui Campioni Results	Norme Rules	
Scorrimento dei fili in corrispondenza alle cuciture/ Seam slippage (carico fisso 180 N)	mm	Ordito / Warp	3	UNI EN ISO 13916-2
		Trama / Weft	5	
Usura Martindale / Abrasion	N° cicli / N° cycles	45.000	UNI EN ISO 12947-2	
Pilling	Scala 1 > 5	3	UNI EN ISO 12945-2	
Solidità della tinta / Color fastness				
Alla luce / to light	Scala: 1 > 8	5	UNI EN ISO 105 - B02	
Al lavaggio in acqua / Washing	Scala: 1 > 5	4-5	UNI EN ISO 105 - D01	
Al lavaggio a secco / Dry Cleaning	Scala: 1 > 5	4-5	UNI EN ISO 105 - D01	
Manutenzione / Care instructions:				
Restringimenti al lavaggio a secco	Ordito / Warp	2-3%		
Shrinkage to dry cleaning (Iso 3175-2)	Trama / Weft	1-2%		
Resistenza al fuoco / Flame resistance		PASS	NOT PASS	
Cigarette test		Pass	BS5852-1	
California Test		Pass	TS 117-2013	
				
				
				
Legenda:				
	Non lavare in acqua / Do not wash in water			
	Il prodotto tessile non sopporta il trattamento al cloro / This fabric cannot be treated with chlorinated agents.			
	Stiratura con temperatura massima della suola del ferro: 110°C / maximum iron temperature: 110 °C - interporre panno umido/ use a damp cloth to iron - la stiratura a vapore può essere rischiosa / steam ironing can damage the fabric			
	Lavabile a secco con percloroetilene, monofluoro-tricloro-metano, idrocarburi, ma con una severa limitazione di aggiunta di acqua e alcune restrizioni per quanto riguarda l'azione meccanica o la temperatura di asciugatura, o entrambe le cose / Dry-cleanable with limited added water and some restrictions on mechanical action or drying temperature or both. Non lavabile a secco presso lavanderie automatiche a gettone / Not washable in automatic laundries.			
	non asciugare a mezzo di asciugabilità a tamburo rotativo / Do not tumble dry.			

DANCING QUEEN



D10 LINO



D20 DIGA



D30 CANYON



D50 ROSEWOOD



D90 SHADOW

PELLE
LEATHER



CLICCA QUI
E SCARICA I **TESSUTI**
PER I TUOI PROGETTI.

CLICK HERE
AND DOWNLOAD THE **FABRICS**
FOR YOUR PROJECTS.

CLIQUEZ ICI ET TÉLÉCHARGEZ
LES **TISSUS** POUR VOS PROJETS.

HAGA CLIC AQUÍ Y DESCARGUE
LOS **TELAS** PARA TUS PROYECTOS.

HIER KLICKEN
UND HERUNTERLADEN
DIE **STOFFE** FÜR IHRE PROJEKTE.

PELLE LEATHER

Pelle bovina mezzo fiore a grana naturale di spessore finito 0,9 – 1,1 mm.
Superficie media 4,8 – 5,0 m2. Concia al cromo.
Tintura passante; rifinizione con resine e pigmenti.
Articolo con mano morbida, tatto ceroso e aspetto semiopaco.

Bovine of European origin, lightly buffed natural grain, finished thickness 0.9 – 1.1 mm.
The average size of each hide is around 4.8 – 5.0 sqm. Chrome tannage.
Through dyed; finishing with resins and pigments.
Article with a pigmented and protective coat, with a soft, waxy feel and semi-matt appearance.



Analisi Test	Metodo di prova Test Method	Unità di misura Measurement Unit	Garantito Guaranteed
Resistenza allo Strappo Pantalone Tear strength - Single edge tear	UNI EN ISO 3377-1	N	> = 20
Solidità del colore allo strofinio - Secco 500 Cicli Colour fastness to rubbing - Dry 500 Cycles	UNI EN ISO 11640:1998	Scala dei Grigi Grey Scale	> = 4
Solidità del colore allo strofinio - Umido 250 Cicli Colour fastness to rubbing - Wet 250 Cycles	UNI EN ISO 11640:1998	Scala dei Grigi Grey Scale	> = 4
Solidità del colore allo strofinio - Sudore 80 Cicli Colour fastness to rubbing - Sweat 80 Cycles	UNI EN ISO 11640:1998 ISO 11641 pH8	Scala dei Grigi Grey Scale	> = 4
Resistenza alle flessioni - Secco 50.000 Cicli Flexing endurance - Dry 50.000 Cycles	UNI EN ISO 5402		Nessun danno No damage
Adesione della rifinizione - A secco Finish Adhesion - Dry	UNI EN ISO 11644	N/Cm	> = 2
Solidità del colore alla luce artificiale Energia di esposizione 16.000 kj/m2 Colour fastness to artificial light Exposition energy 16.000 kj/sqm.	UNI EN ISO 105 B02 (MET. 5)	Scala dei Blu Blue Scale	> = 5
Resistenza alla sigaretta e alla piccola fiamma Burning behaviour to cigarette and match flame	BS 5852:1979 BS EN 1021-1-2:2006		Passa Pass

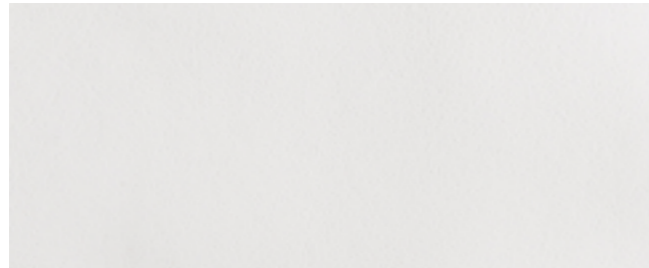
Evitare la luce diretta del sole. Evitare l'esposizione alle fonti di calore.
Avoid direct sunlight. Avoid exposure to heat sources.

I risultati analitici riportati si riferiscono unicamente al campione sottoposto a prove.
La riproduzione parziale è ammessa soltanto a seguito di autorizzazioni scritte del laboratorio.

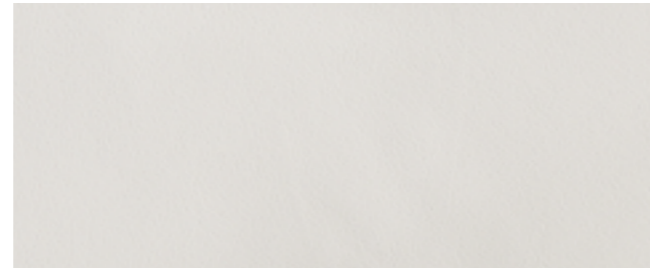
The analytical results are referred only to the sample tested.
This document may be reproduced only in full. It may be partially reproduced only by written approvals of the laboratory.

I COLORI DEI TESSUTI REALI POSSONO DISCOSTARSI SENSIBILMENTE DALLA LORO RIPRODUZIONE IN FILE DIGITALE. CAMPIONARIO DISPONIBILE SU RICHIESTA A SALES@RONDADESIGN.IT
THE COLORS OF PHYSICAL FABRICS MAY DIFFER SIGNIFICANTLY FROM THEIR REPRODUCTION IN DIGITAL FILES. PHYSICAL SAMPLES AVAILABLE UPON REQUEST AT SALES@RONDADESIGN.IT

PELLE LEATHER



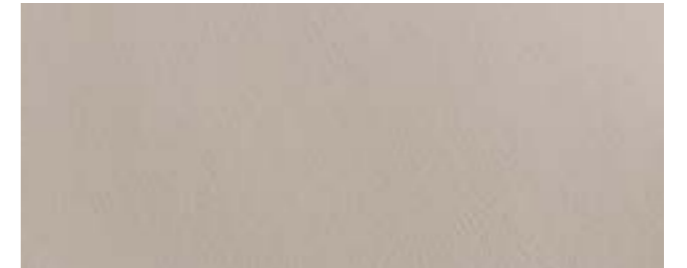
P01 BIANCO OTTICO



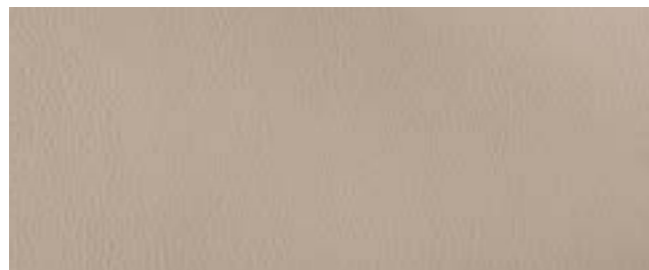
P34 GESSO



P35 LATTE



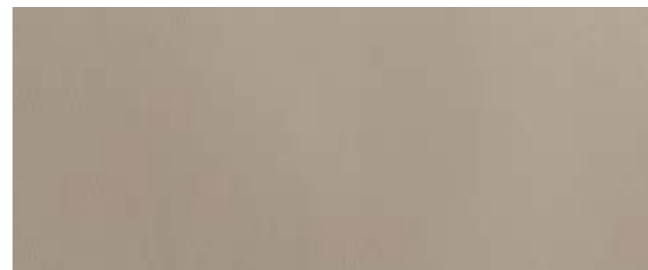
P63 CHALKY



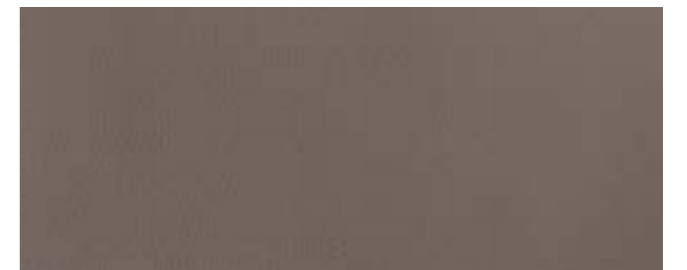
P65 MARMO



P29 STONE



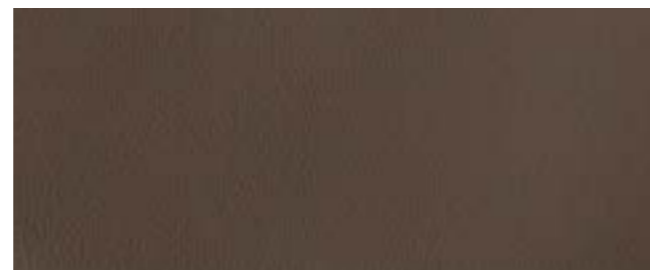
P67 EARTH



P59 TORTORA



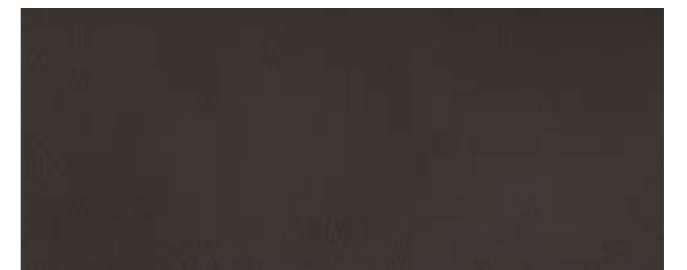
P51 ROSA ANTICO



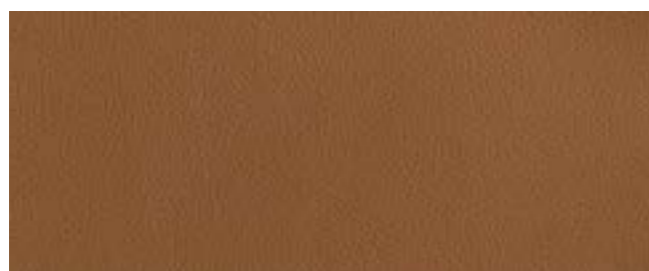
P27 FANGO



P82 COFFEE



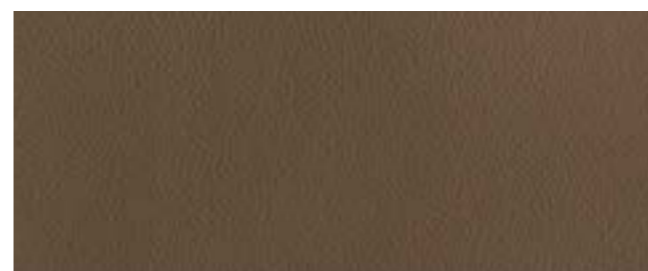
P11 TESTA DI MORO



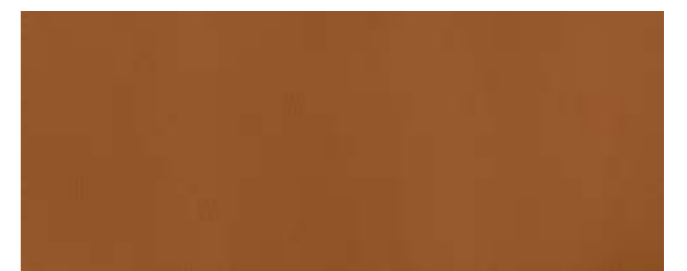
P80 NEW COGNAC



P46 MORETTO

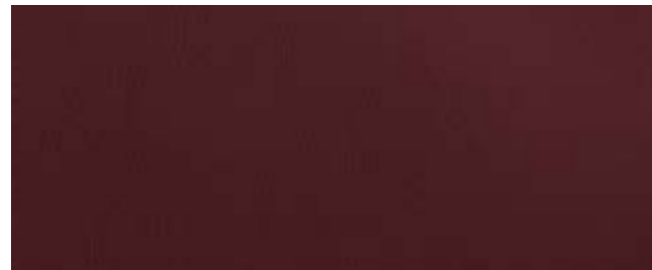


P09 WOOD



P18 ARANCIO

PELLE LEATHER



P15 BORDEAUX



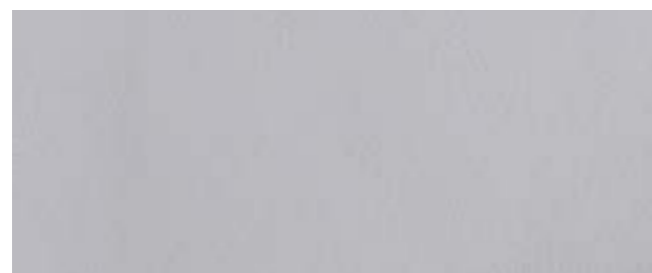
P20 GIALLO



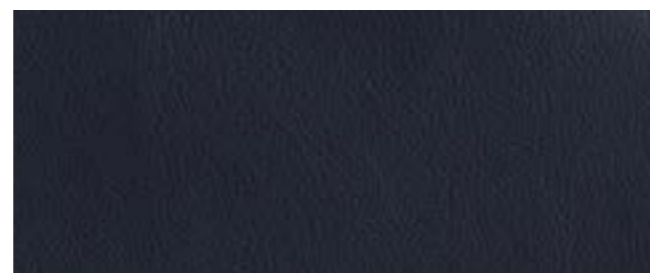
P74 OCTANE



P93 ACQUAMARINA



P73 IRIS



P44 NOTTE



P69 CENERE



P60 ASFALTO



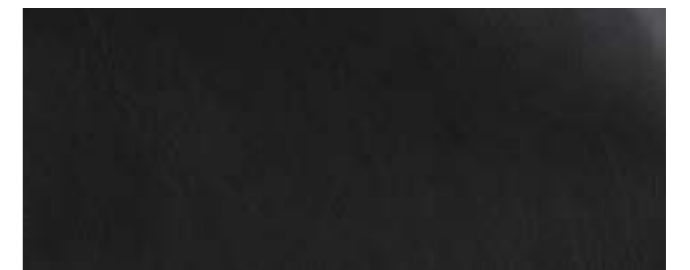
P68 FROZEN



P23 GRIGIO



P45 ANTRACITE



P22 NERO LISCIO

**ECOPELLE
SYNTHETIC LEATHER**



CLICCA QUI
E SCARICA I **TESSUTI**
PER I TUOI PROGETTI.

CLICK HERE
AND DOWNLOAD THE **FABRICS**
FOR YOUR PROJECTS.


CLIQUEZ ICI ET TÉLÉCHARGEZ
LES **TISSUS** POUR VOS PROJETS.

HAGA CLIC AQUÍ Y DESCARGUE
LOS **TELAS** PARA TUS PROYECTOS.

HIER KLICKEN
UND HERUNTERLADEN
DIE **STOFFE** FÜR IHRE PROJEKTE.

ECOPELLE SYNTHETIC LEATHER



Caratteristiche tecniche Technical details			Unità di misura Measurement Unit	Rif. Norme	
Composizione Composition	2% PU - 68% PVC 30% PES/CO		%		
Altezza pezza Width	140		cm		
Peso tessuto Weight	640 gr/m ² + 10%		gr/m ²		
Spessore Thickness	1,00 mm + 0,1 mm		mm		
Carico a rottura Tensile resistance	lunghezza / long altezza / across	600 N 400 N	N (1Kg. = 9,8 Newton)	ISO	1421
Allungamento a rottura Extension at break	lunghezza / long altezza / across	15% 65%	%	ISO	1421
Resistenza alla lacerazione Tear strenght	lunghezza / long altezza / across	16 N 22 N	N (1Kg. = 9,8 Newton)	UNI	4818
Delaminazione Adhesion	lunghezza / long altezza / across	45 N 40 N	N (1Kg. = 9,8 Newton)	UNI	4818 - 10
Solidità delle tinte allo sfregamento Colour fastness to rubbing	secco / dry umido / wet	4 / 5 4 / 5		crock meter - ISO	105 X 12
Solidità delle tinte alla luce artificiale Colour fastness to artificial light	6		scala dei blu blue scale	xeno - ISO	105 B02
Solidità delle tinte all'acqua di mare e clorata Colour fastness to sea and chlorinated water	4		scala dei grigi grey scale	ISO	105 E02 + ISO 105 E03
Resistenza alle flessioni Resistance to flexures	> 100.000 cicli / cycles			bally - UNI	4818-13
Resistenza all'abrasione Abrasion resistance	> 100.000 cicli / rubs			martindale -	
Norme di manutenzione Cleaning				ISO	5470 - 2
Trattato antiacaro e antimuffa Anti-acaro and anti-mold treatment	BIO PRUF treated				
Resistenza al fuoco (la resistenza al fuoco dipende dal tipo di schiuma utilizzata)	Italia Italy	UNI 9175 Class 11M		Europa Europe	EN 1021:14 - 1 EN 1021:14 - 2
Fire retardant (flame retardant performance is dependent upon the foam used)	Inghilterra England	BS 5852:06 IS 0 (cigarette) BS 5852:06 IS 1 (match)		Stati Uniti U.S.A.	California TB 117:2013
	Navale Nautical	FTP Code 307(88):10 Annex 1 Part 8			

Alcuni coloranti per abbigliamento e accessori (es. jeans) possono migrare verso i colori chiari di questo articolo. Questo fenomeno aumenta con l'umidità e la temperatura. Non ci assumiamo alcuna responsabilità per il trasferimento di colori causato da contaminanti esterni.
Some dyes for clothing and accessories (ex. jeans) may migrate to the bright colors of this article. This phenomenon increases with humidity and the temperature. We do not assume any responsibility for the transfer of colors caused by external contaminants.

Questi valori sono dati a titolo indicativo e in buona fede e non possono considerarsi in alcun caso vincolanti. L'impiego del prodotto deve essere valutato in base a ciò che si deve realizzare. Non si risponde del suo utilizzo per impieghi impropri. Sono ammesse leggere differenze di colore tra differenti partite.
These values are given as indicative and in good faith and can not in any case be considered binding. The use of the product must be assessed on the basis of what is to be achieved. You are not responsible for its use for improper use. Differences in color between different batches are allowed.

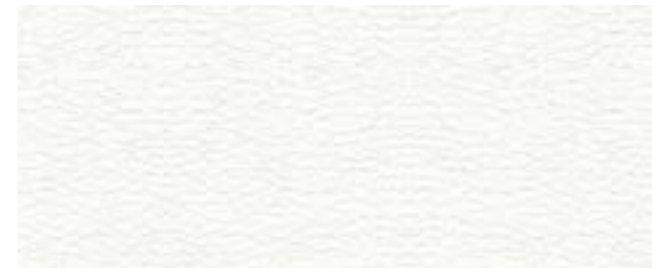
ECOPELLE SYNTHETIC LEATHER



E06 BIANCO OTTICO



E16 GESSO



E17 LATTE



E13 PERLA



E18 SABBIA



E14 GRIGIO SETA



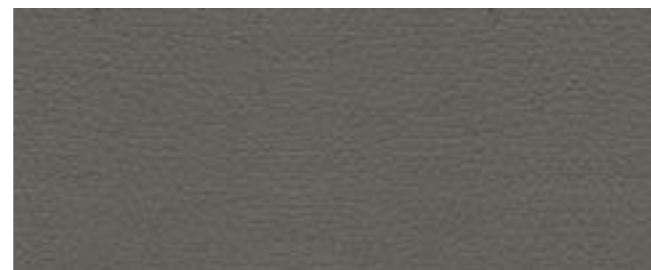
E15 BEIGE



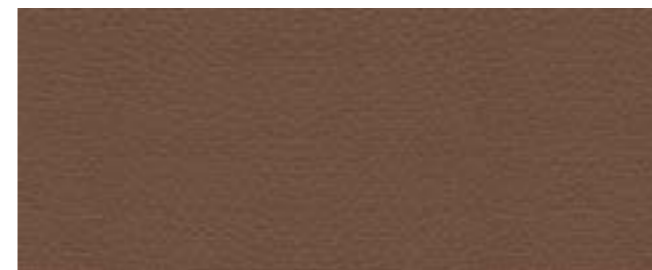
E12 TAUPE



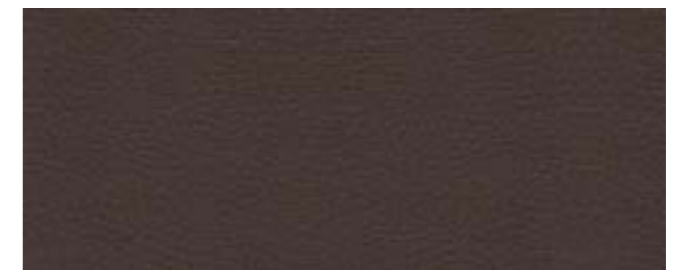
E11 ASFALTO



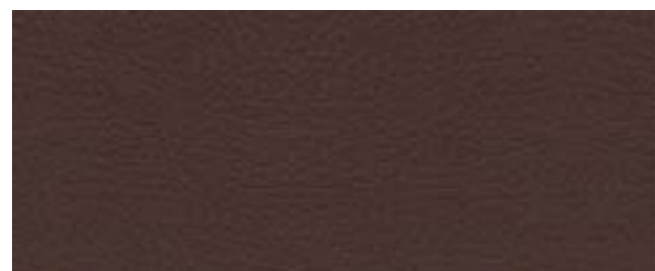
E10 FANGO



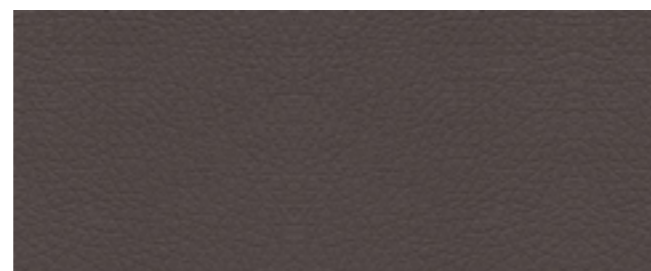
E25 TERRA DI SIENA



E08 MORETTO

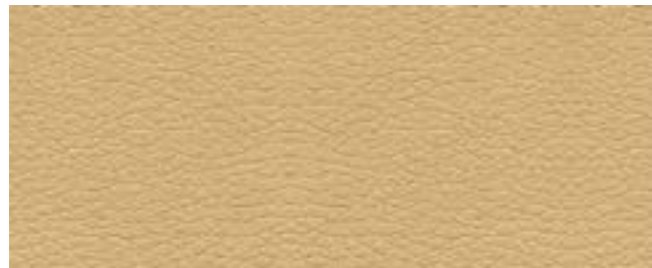


E09 CASTAGNA



E07 MARRONE

ECOPELLE SYNTHETIC LEATHER



E19 CREMA



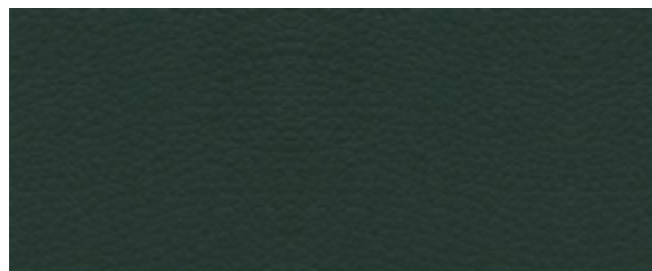
E24 ARANCIO



E21 BORDEAUX



E22 BORGOGNA



E23 VERDE SCURO



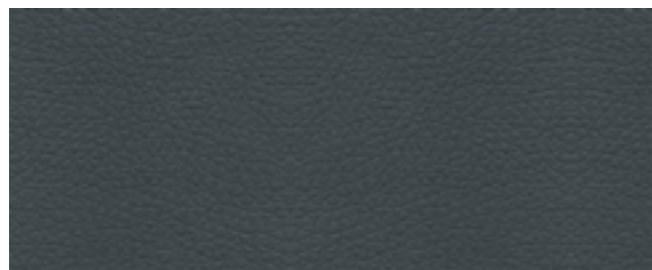
E20 BLU SCURO



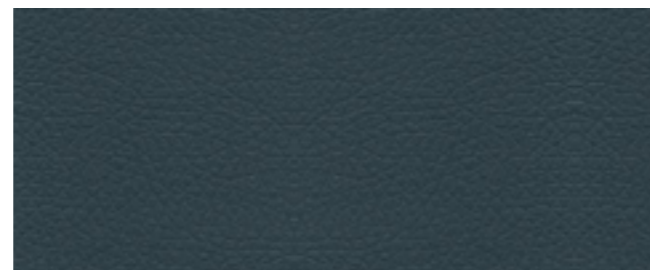
E03 GHIACCIO



E02 GRIGIO



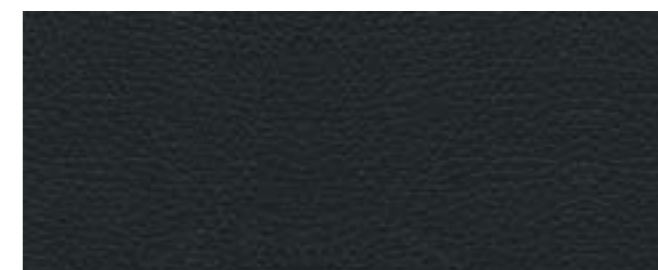
E01 ARDESIA



E04 ANTRACITE



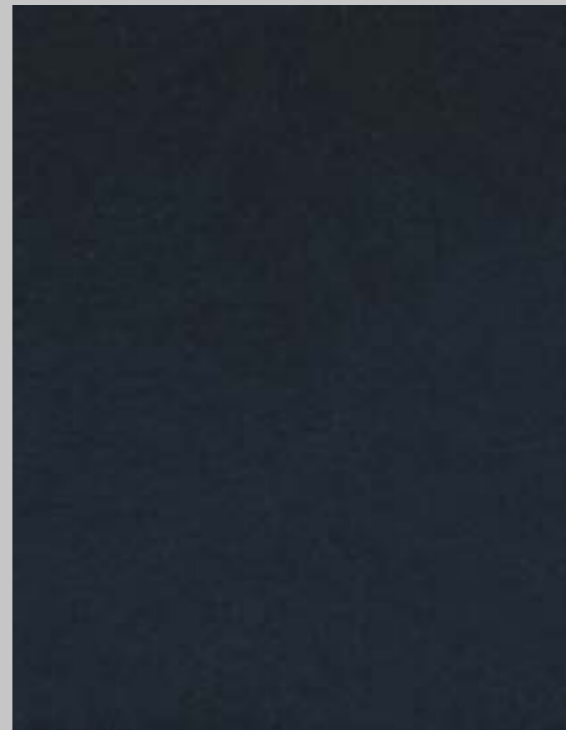
E26 MARRONE NERO



E05 NERO



VELLUTO VELVET



CLICCA QUI
E SCARICA I **TESSUTI**
PER I TUOI PROGETTI.

CLICK HERE
AND DOWNLOAD THE **FABRICS**
FOR YOUR PROJECTS.

CLIQUEZ ICI ET TÉLÉCHARGEZ
LES **TISSUS** POUR VOS PROJETS.

HAGA CLIC AQUÍ Y DESCARGUE
LOS **TELAS** PARA TUS PROYECTOS.

HIER KLICKEN
UND HERUNTERLADEN
DIE **STOFFE** FÜR IHRE PROJEKTE.



VELLUTO VELVET



Caratteristiche Specifications			Unità di misura Measurement Unit	Rif. Norme
Altezza pezza Width	138/140		cm	
Peso tessuto Weight	620		gr/ml	
Tintura Dyeing	Tintura con coloranti reattivi Reactive dye			
Tessitura Weaving	Velluto Velvet			
Note	Anti ammaccamento - Idrorepellente Anti denting - Waterproof			
Composizione Composition	100% CO		%	
Resistenza alla trazione Tensile (breaking) strength	Ordito / Warp Trama / Weft	>35 >35	N (1Kg. = 9,8 Newton)	UNI EN ISO 13934 - 1
Resistenza alla lacerazione Tear strength	Ordito / Warp Trama / Weft	>1 >2	N (1Kg. = 9,8 Newton)	UNI EN ISO 13937 - 3
Resistenza allo slittamento dei fili-6 mm Seam slippage-6 mm	Ordito / Warp Trama / Weft	<1 <1	N (1Kg. = 9,8 Newton)	UNI EN ISO 13936-2
Usura Martindale abrasion	>65.000		N° cicli nr. of rubs	UNI EN ISO 12947-2
Pilling	5		N° cicli nr. of rubs	UNI EN ISO 12945-2:2002
Solidità della tinta Colour fastness	Alla luce To light	6	Scala: 1 a 8	UNI EN ISO 105 - B02
	Allo Sfreg.secco To Dry Rubbing	>5	Scala: 1 a 5	UNI EN ISO 105 - X12
	Allo Sfreg.umido To Wet Rubbing	>4/5	Scala: 1 a 5	UNI EN ISO 105 - X12
Manutenzione Care Instructions	Ritiri al lavaggio a secco Shrinkage dry	Ordito / Warp Trama / Weft	1 % 1 %	
Resistenza al fuoco Flame resistance	Cigarette Test Match Test	PASS NONE		BS 5852:1979 PART 0 PART 1
Norme di manutenzione Cleaning				

I COLORI DEI TESSUTI REALI POSSONO DISCOSTARSI SENSIBILMENTE DALLA LORO RIPRODUZIONE IN FILE DIGITALE. CAMPIONARIO DISPONIBILE SU RICHIESTA A SALES@RONDADESIGN.IT
 THE COLORS OF PHYSICAL FABRICS MAY DIFFER SIGNIFICANTLY FROM THEIR REPRODUCTION IN DIGITAL FILES. PHYSICAL SAMPLES AVAILABLE UPON REQUEST AT SALES@RONDADESIGN.IT

VELLUTO VELVET



V01 LATTE



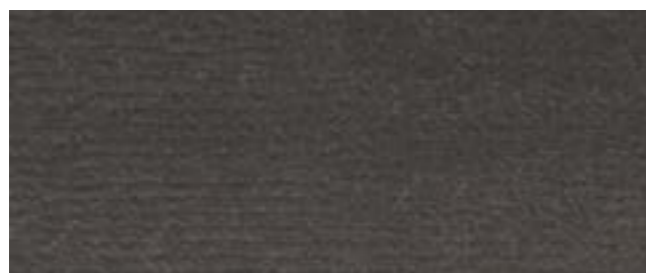
V02 CHALKY



V03 SABBIA



V04 TORTORA



V05 SASSO



V24 ROSA ANTICO



V26 MELANZANA



V29 FUCSIA



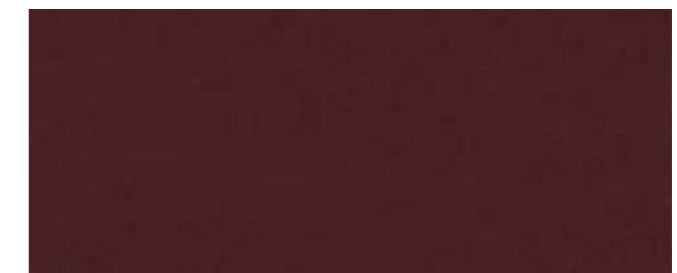
V07 VIOLA SCURO



V11 VINACCIA



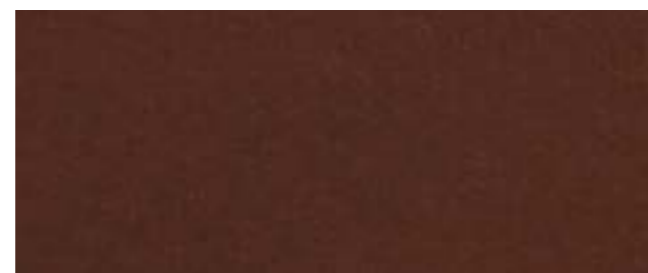
V10 BORDEAUX



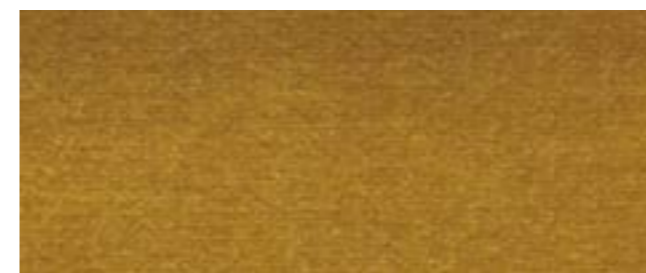
V09 CARMINIO



V20 ROSSO



V06 MATTONE



V40 OCRA



V27 LIMONE

VELLUTO VELVET



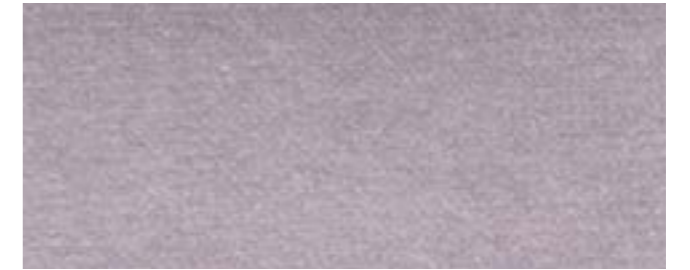
V17 VERDE ACIDO



V37 VERDE BOSCO



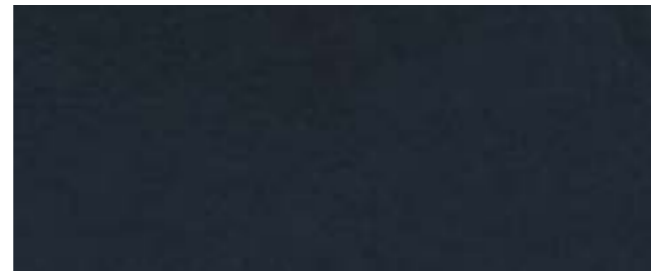
V38 SALVIA



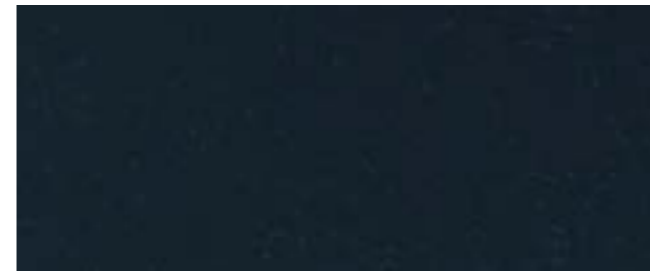
V23 NOCCIOLA



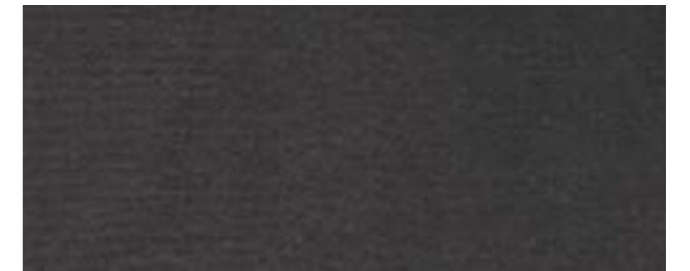
V13 OTTANIO



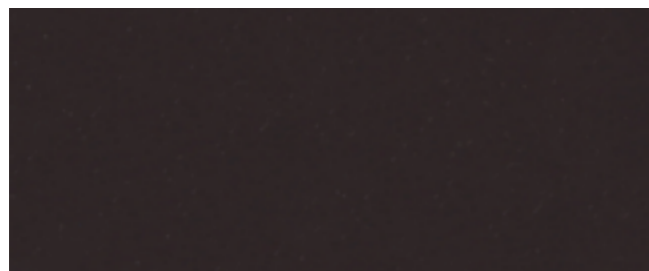
V14 BLU DI PRUSSIA



V25 NOTTE



V22 FANGO



V16 CAFFÈ



V21 PERLA



V33 GRIGIO



V30 NERO