

# Prima

Design: Studio28

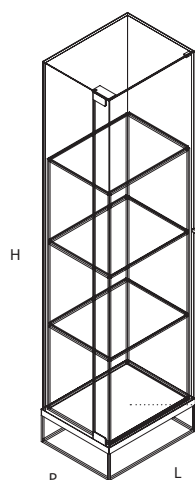


**Vetrina in cristallo extrachiario, con struttura interna in metallo a sezione quadrata e anta a cerniera laterale. I ripiani interni sono in cristallo e nel ripiano inferiore è integrata una piastra di illuminazione a led opzionale.**

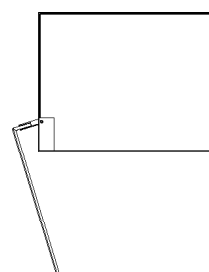
Display cabinet in extra-clear glass with hinged door. Its internal structure is in metal with squared section. Glass inner shelves. The lower one has an optional integrated LED lighting plate.

## Dimensioni Dimensions

L. 486  
H. 1852  
P. 382



Base illuminante  
Illuminating base



Apertura anta  
Door opening

## Finiture Finishings

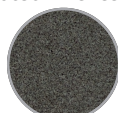
P - Finiture a polveri / Powder coated finishes



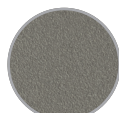
Bianco  
White



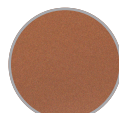
Nero  
Black



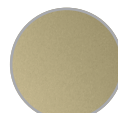
Grafite  
Graphite



Titanio  
Titanium



Rame  
Copper



Ottone  
Brass